

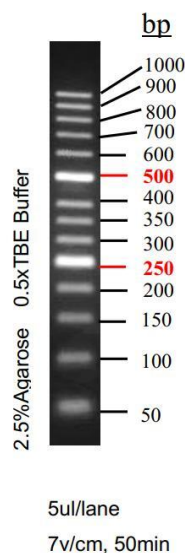


AffiCHEM® 50bp DNA Ladder

Catalog No.	Size	Storage/Shelflife
AFG-EEM-0005	250µl	-20C°/2 years
AFG-EEM-0005	500µl	-20C°/2 years

Introduction

The 50bp Ladder DNA Marker is composed of 14 DNA fragments with a length of 50 bp to 1000 bp, dissolved in 1×Loading Buffer, and can be used for direct electrophoresis of 5-10 µl during used, which is very convenient to use. The indicator bands were 250 bp and 500 bp, the concentration was 100 ng/5 µL, and the other bands were 40 ng/5 µL.



Note

1. When the width of the sample well during electrophoresis is less than 5 mm, a clear band can be obtained by taking 5 µl Marker electrophoresis each time. If the sample hole is widened, the sampler volume of Marker must be increased appropriately.
2. For DNA electrophoresis, the purity of Agarose greatly affects the clarity of DNA bands. Therefore, the best quality Agarose should be used for electrophoresis. The recommended gel concentration is 2.5% to 3%.
3. When performing Agarose electrophoresis, the concentration of Agarose is closely related to the separation performance of DNA fragments. The greater the concentration of Agarose, the better the separation performance of short DNA; conversely, the smaller the concentration of Agarose, the more favorable for the separation of long DNA.

